

VISION PRO 1000

THE FUTURE OF PROFESSIONAL NAIL STYLING

PRONAILS INNOVATION
PATENTED TECHNOLOGY



CONTENTS

1	Important information before initial operation.....	2	7	Operation - Instrument	8
1.1	Symbols used	2	7.1	Control panel	9
1.2	General safety instructions	2	7.2	Memory Function	9
1.3	Scope of delivery	3	7.3	Speed Control with the Foot Switch	10
1.4	Packaging	3	7.4	Key lock touch display	10
1.5	Recycling	3	7.5	Replacing the dust bag	10
2	Intended use	3	7.6	Replacing the vacuum filter	10
2.1	Ambient conditions	3	8	Operation - Handpiece	11
2.2	Storage and transport	3	8.1	Changing the bits	11
3	Vision Pro 1000	4	8.2	Disconnecting the handpiece from the motor unit	12
3.1	Front view	4	8.3	Attaching the handpiece to the motor unit	12
3.2	Rear view	4	9	Cleaning, preparation and care	14
4	Handpiece	4	9.1	Cleaning and Disinfection - handpiece	14
5	Customer and user protection	5	9.2	Cleaning and disinfection - device	14
6	Commissioning	5	10	Maintenance	14
6.1	Preparing the unit	5	11	Accessories and spare parts	15
6.2	Attaching the suction hose support	6	12	Technical data	15
6.3	Connecting the handpiece to the unit	6	13	Warranty	15
6.4	Inserting rotating instruments	6	14	Disposal	15
6.5	Connecting the foot switch	7	15	Possible error messages	16
6.6	Connecting the power supply	8	Annex 1	17	
6.7	Inserting the pad holder	8	Annex 2	19	

1 IMPORTANT INFORMATION BEFORE INITIAL OPERATION

The information for use is an integral part of the manicure and pedicure device and must be kept close by. If you pass the manicure and pedicure device on to a third party, also pass on the information for use, as it contains important instructions for starting up and operating the device.

In order to get to know the many advantages of the device and to ensure the safety of the device, it is absolutely necessary to read this user information and the safety instructions contained therein carefully before using the device.

After unpacking, please check that the unit is complete according to the scope of delivery and that it has not been damaged during transport. If there are any doubts, please contact your ProNails Distributor immediately.

1.1 SYMBOLS USED



Caution, Attention Important information.
This symbol indicates a danger to people or to the appliance.



Caution Mains voltage! Danger of electric shock.



References to additional information in the usage information.



Disposal note

1.2 GENERAL SAFETY INSTRUCTIONS

- Operate the device only if it is in perfect condition and only in the sense of its intended use.
- The user must apply and comply with all applicable directives and laws, as well as applicable national regulations, in particular the applicable occupational health and safety regulations and accident prevention measures.
- Before using the device for the first time, check that the type of current and mains voltage of the power source match the specifications on the type plate.
- Only connect the device to a suitable socket. The device may only be operated with the mains adapter supplied.
- If malfunctions occur, switch off the device immediately and disconnect it from the mains. In this case, contact your ProNails Distributor.
- If the speed setting (touch display) or display elements show any damage or no longer function properly, the device must no longer be used. Switch off the device immediately, disconnect the mains plug and contact your ProNails Distributor.
- If liquids or other foreign matter get into the interior of the device, the device must be switched off immediately and disconnected from the power supply. Contact your ProNails Distributor before continuing to use the appliance.
- Unauthorised opening of the device or tampering with the handpiece is not permitted. Unauthorised opening of the device or the handpiece will render the warranty invalid.
- The warranty also becomes invalid if the consumables specified in the information for use are not used, if the customer or other unauthorised persons tamper with the device, if the device is used for purposes other than those for which it was intended, if damage is caused by gross negligence or improper use.
- In the event of abnormal functioning of the VP1000 appliance or the handpiece, discontinue use immediately and contact your ProNails Distributor.
- All handpieces, micromotors and instruments are designed and constructed for their specific applications. Improper use may result in damage to human tissues, premature wear, and destruction of the instruments and endangerment of the customer, the user or third parties.
- Never operate the device without a dust bag or motor protection.
- Never operate the device without a bit. If you are not working with the device always insert the dummy pin.
- Only use bits with a maximum head diameter of 13mm and a maximum head length of 25mm
- Only use bits with a pin length of 31.75mm and a pin diameter of 2.35mm

1.3 SCOPE OF DELIVERY

The scope of delivery includes:

- 1 Piece Device
- 1 Piece Handpiece with dummy pin
- 1 Piece Mains adapter
- 1 Piece Motor Filter
- 5 Pieces Dust bags
- 1 Piece Antenna holder for suction tube
- 1 Piece Cotton Pad holder

Optional scope of delivery:

Progressive Foot Pedal - for stepless speed control

1.4 PACKING

The packaging protects the appliance from damage during transport. The packaging is made of valuable materials that can be recycled.



We recommend that you keep the packaging box and the padding inserts for return shipment in case of maintenance or repair.

1.5 RECYCLING

If you want to dispose of the packaging, make sure that it is disposed of according to type. For this purpose, use the local possibilities for collecting paper, cardboard and light packaging. Old appliances do not belong in household waste and must be disposed of as electronic waste.

2 INTENDED USE

The Vision Pro 1000 is intended for cosmetic applications in manicure and pedicure salon services.

The handpiece of the device can accommodate rotating instruments such as burs and abrasives. It is used in the following areas and applications for dry technology:

- Grinding and milling of gel or acrylic nail enhancements
- Cleaning and polishing nails
- Removal of calluses

Use of the device in other areas and applications is at your own risk and can be potentially dangerous. Improper use can lead to damage to persons and property.



• The manufacturer cannot be held responsible for damage caused by improper use or incorrect operation.



• In the event of improper use, opening or modification of the appliance, any claim under the warranty will be invalidated.

2.1 AMBIENT CONDITIONS

Operation

Temperature range	+10 to +35	°C
Relative humidity, non-condensing; no tropical protection	30 to 85	%
Air pressure	860 to 1060	mbar

Transport

Temperature range	-10 to +50	°C
Relative humidity, non-condensing, no tropical protection	10 to 85	%
Air pressure	500 to 1060	mbar

Storage

Temperature range	-10 to +50	°C
Relative humidity, non-condensing, no tropical protection	10 to 85	%
Air pressure	500 to 1060	mbar

Subject to technical changes.



• In the event of ambient conditions outside the permissible functional limits, the application must be interrupted immediately and the device switched off.

2.2 STORAGE AND TRANSPORT

For proper storage of the product, please observe the storage conditions.

The device is to be stored or transported in the outer packaging (original carton).

3 VISION PRO 1000

3.1 FRONT VIEW

3.2 REAR VIEW

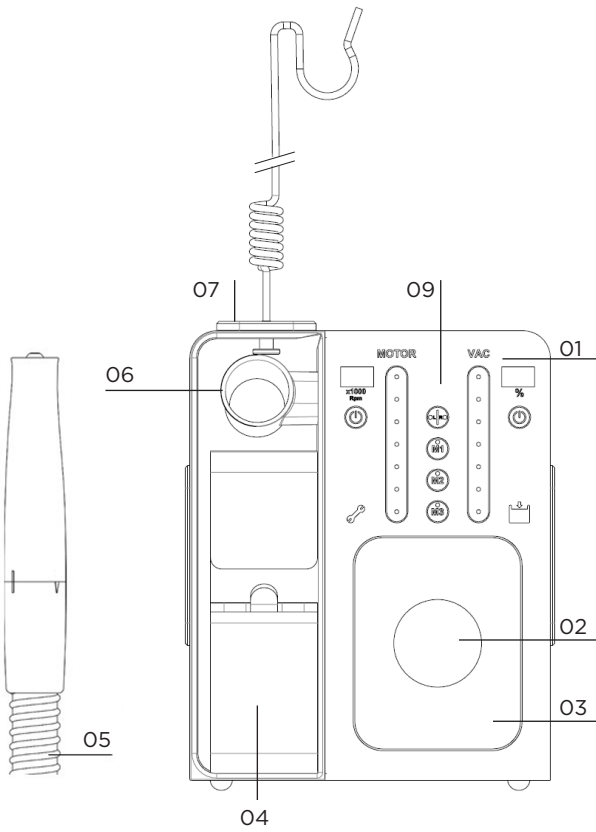


Figure 1 - Front view

- 01 Device
- 02 Connection suction hose
- 03 Suction chamber cover
- 04 Cotton pad holder
- 05 Handpiece with suction hose
- 06 Handpiece holder
- 07 Bit holding positions
- 08 Support for suction hose
- 09 Touch display with controls

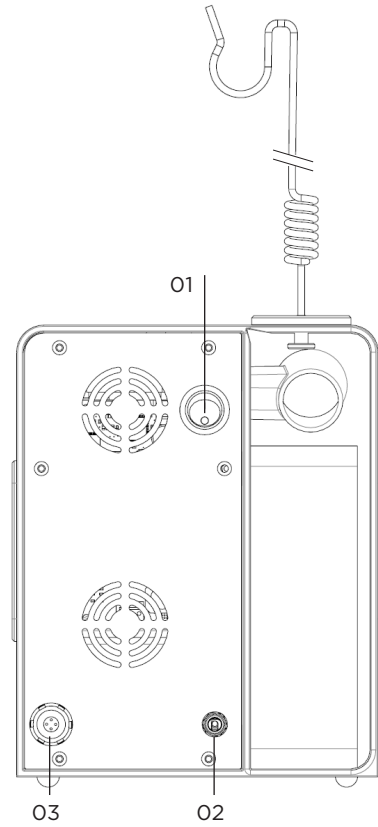


Figure 2 - Rear view

- 01 Main switch On/Off
- 02 Connection - external mains adapter
- 03 Connection - Foot pedal

4 HANDPIECE

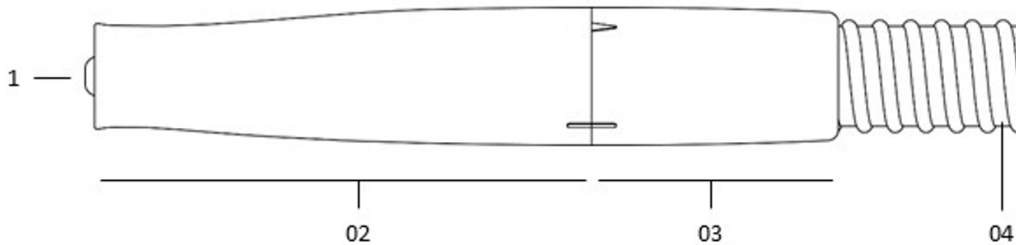


Figure 3 - Handpiece Main components

- 01 Inner sleeve with clamping system
- 02 Outer Sleeve
- 03 Micro Motor
- 04 Suction hose



• Only rotary instruments with a cylindrical shaft diameter of 2.35mm may be used. Further information can be found in DIN EN ISO 1797-1. In addition, observe the manufacturer's instructions on the maximum speed, cleaning, disinfection and sterilisation of the rotary instruments. See annex 1 for an overview of the ProNails approved bits with rotation speed and direction.

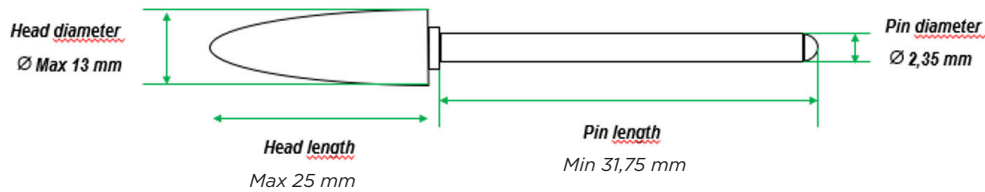


Figure 4 - Approved bit dimensions



Safety instructions for operating the handpiece

- Check the handpiece for vibration, noise and overheating before each use. If any irregularities occur, stop use immediately and contact your ProNails Distributor.
- The user is responsible for regular maintenance and inspection of the handpiece.
- Improper use will lead to poor work results and risk of injury.
- Follow the manufacturer's instructions for the handpiece.
- Do not use the handpiece while you want to change the direction of rotation. Wait until the direction of rotation has changed before continuing to work.
- Instruments made of tool steel are susceptible to corrosion! Therefore, please use only cleaning and disinfecting agents with corrosion protection for cleaning and disinfecting. Dry the instruments immediately after cleaning and disinfection.
- Do not subject the handpiece to mechanical shocks. Do not drop the handpiece, this can lead to a malfunction.
- Suction of liquids or air with a high liquid content (e.g. water mist) is not permitted and may damage the instrument.
- Do not operate the handpiece without a bit, as this may cause the handpiece to malfunction

5 CUSTOMER AND USER PROTECTION



For the protection of customers, users and third parties, the following points must be observed:

- Operate the device only if it is in perfect condition and only in the sense of its intended use.
- For your own safety, wear suitable personal protective equipment during use in accordance with applicable health and safety regulations.
- Only operate the device when the motor filter and dust bag are inserted.
- Check the suction hose and the seal of the suction chamber for possible damage at regular intervals in order to detect a possible reduction in suction power at an early stage and to avoid a possible increased dust load.
- During treatment, make sure that no loose objects (cloths, cotton wool, clothing, hair, jewellery, etc.) get into the treatment field and can get caught in the rotating instruments.
- Clean the device after each use and before changing clients.
- Before or after a longer break in use, the device must also be cleaned and maintained.
- Have the prescribed service and maintenance work carried out regularly to ensure sustainable use and value retention.

6 START-UP

6.1 PREPARING THE DEVICE

Please first check the suitability of the premises at the place of use, especially with regard to power supply, evenness of the installation surface, cleanliness of the room and climatic conditions - only when the premises are suitable, unpack the device.



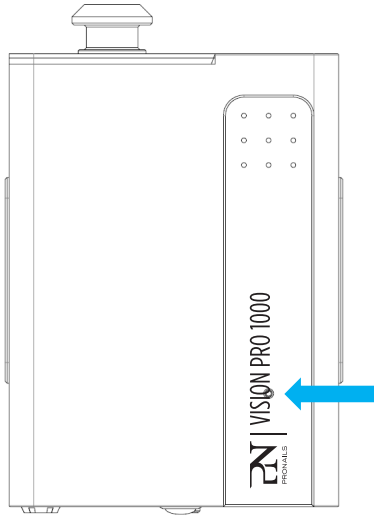
Safety instructions for commissioning the device

- When using the device for the first time, please check the outer packaging of the device for possible external damage. If transport damage is detected, contact your local ProNails Distributor and clarify the further procedure.
- Make sure that the device is operated on a suitable stable level surface and cannot tip over or fall down.
- Make sure that the ventilation slots on the housing are not covered and remain unobstructed.
- The device must be positioned in such a way that, in the event of a malfunction, it can be easily disconnected from the mains supply by pulling out the mains plug.
- Heat sources such as direct sunlight and radiators in the immediate vicinity of the device can have a negative effect on cooling. For this reason, the device should not be set up near sources of heat.
- The device is not intended for operation in potentially explosive atmospheres or in wet rooms.

To attach the suction hose support, proceed as follows:

Step 1

Insert the suction hose support on the upper side of the housing in the hole provided for it.



Step 2

Unscrew the fixing knob from the support antenna. Turn the support antenna clockwise as far as it will go into the thread of the handpiece holder below it. Do not apply force. Screw on the knob under the support antenna.

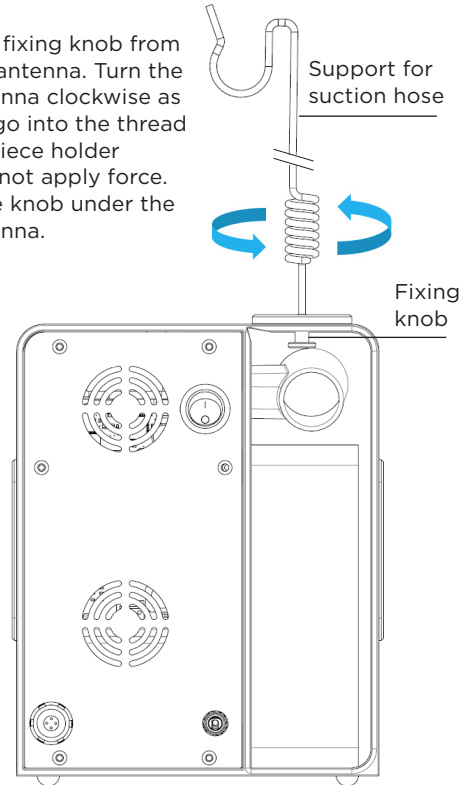


Figure 5 - Attachment of the suction hose support

To connect the handpiece, proceed as follows:

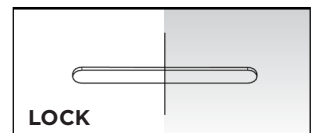
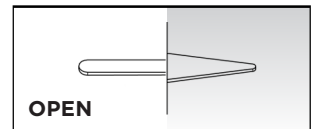
- (1) Remove the safety notice from the suction chamber.
- (2) Before connecting the handpiece, first push the dust bag included in the scope of delivery onto the pipe socket as far as it will go.
- (3) Carefully slide the pushed-on dust bag with the suction chamber cover into the suction chamber of the appliance and connect the gliding pins with the contact sockets on the suction chamber of the appliance.



• Please make sure that you insert the handpiece connector straight into the contact sockets when plugging it in and do not tilt it.

To insert the rotary instruments, proceed as follows:

1. Make sure the micromotor is switched off before inserting the rotary instrument.
2. To be able to remove the dummy pin, turn the handpiece in the **“OPEN”** direction - until the straight marking on the outer sleeve coincides with the triangular marking as follows.
3. Remove the dummy pin from the chuck.
4. Now insert your selected working bit as deep as possible into the chuck until the end stop can be felt.
5. To lock the bit firmly in place again, by turning the handpiece towards the **“LOCK”** position - until the two straight markings coincide.



6. Check the tight fit of the instrument so that it cannot come loose during treatment.
7. The handpiece with the newly inserted bit is now ready for use.

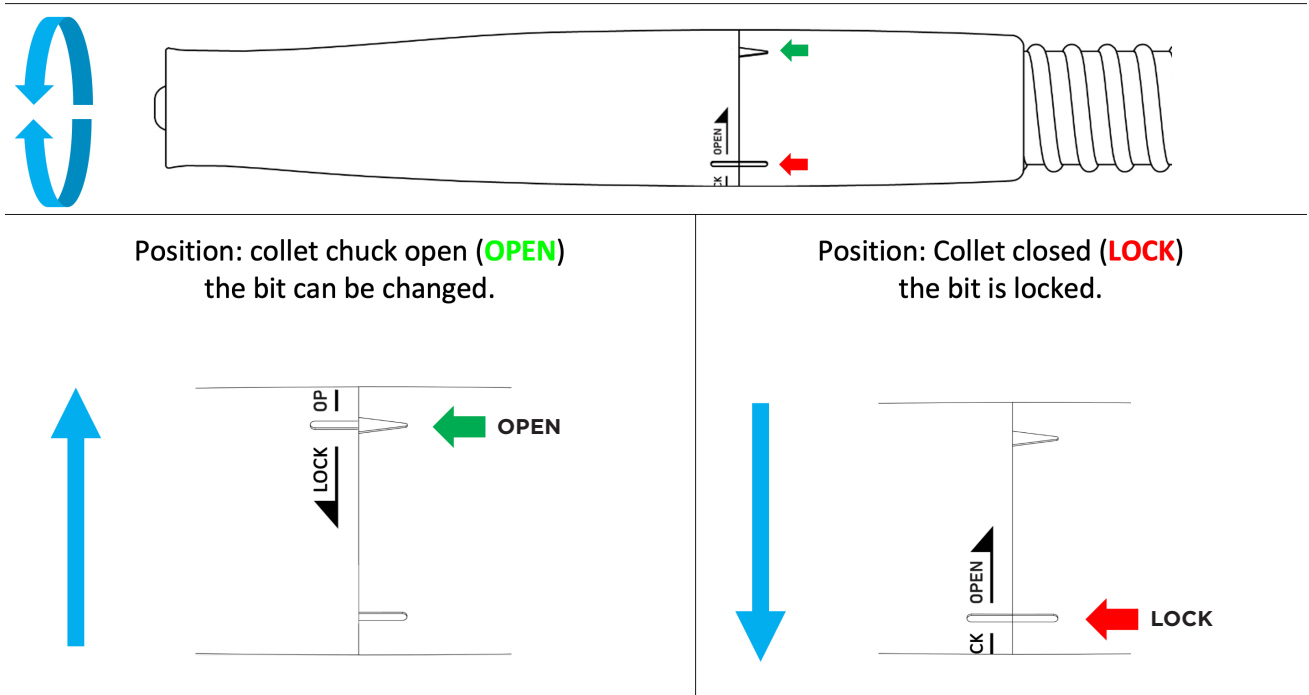
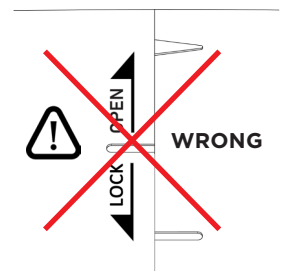


Figure 6 - Locking & unlocking of bits


- Never change or insert rotating instruments until the micromotor has come to a complete stop.
- Do NOT lock the bit half-way! Always make sure the horizontal locking lines are fully aligned. If the handpiece is operated while the bit is not fully locked then the bit will not turn and the handpiece will overheat.



To check the concentricity of the rotating instruments, we recommend using a cutter check gauge (see accessories).



6.5 CONNECTING THE PROGRESSIVE FOOT PEDAL

1. Make sure your device is turned off at the back of the unit (green switch must be on "0").
2. Insert the plug of the foot control into the socket on the rear panel of the device before operating the device. The socket of the foot control is marked with the following symbol.  Make sure that the two arrows marked on the connection plug are facing upward.
3. Now turn on your VP1000 at the back of the device by pressing the green switch to position "I".
4. On the touch screen set both the maximum rotation speed as well as the suction power that you wish to work at.
5. You can now work with the foot pedal without having to touch the screen further. The harder you press on the foot pedal, the higher the rotation speed will be until you reach the maximum rotation speed which you have set. You can decrease the rotation speed by lowering the pressure on the foot pedal and stop it completely by removing your foot from the foot switch.

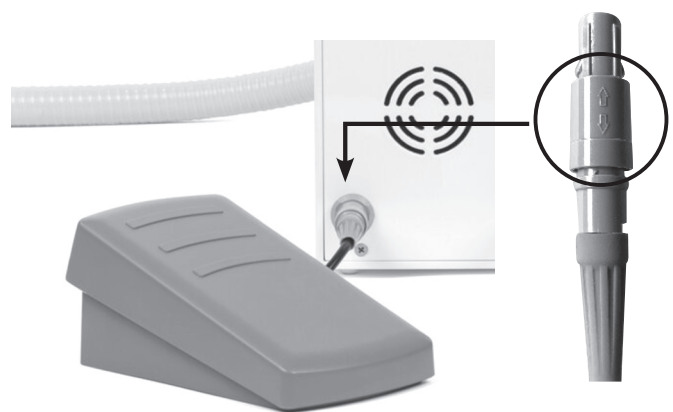


Figure 7 - Connection of foot pedal



• Please note that you may only connect or disconnect the handpiece to the suction chamber or the foot control to the device when the main switch on the back of the device is in the OFF position.



- In Europe, a mains voltage of 230V, 50Hz is used. Before switching on the appliance, please make sure that the information on the type plate of the mains adapter corresponds to this value.

To connect the mains adapter, proceed as follows:

- (1) Connect the supplied mains adapter to the mains socket on the back of the device (see figure 2).
The socket of the mains adapter is marked with the following symbol.
- (2) Plug the mains adapter into a suitable socket.



- Only use the mains adapter included in the scope of delivery. Do not use the mains adapter if it is visibly damaged.

To insert the cotton pad holder, proceed as follows:

1. Insert the equipped pad holder from the rear into the slot on the side of the enclosure.
2. Position the hole of the pad holder over the fastening element on the bottom of the housing and lower the pad holder onto the bottom of the housing.
3. So that the pad holder is fixed underneath the fastening element, now push it forward as far as it will go.

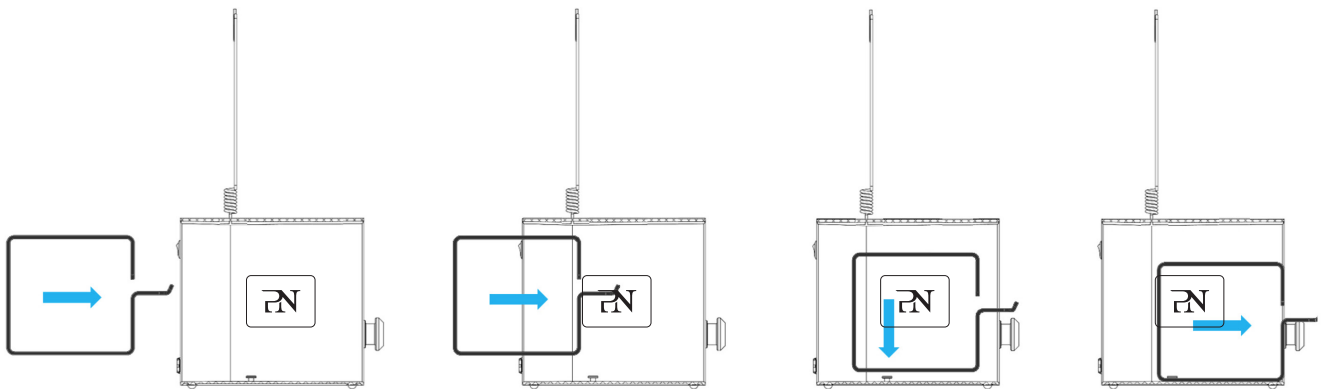


Figure 8 - Installing the cotton pad holder / side view

7 OPERATION - DEVICE



Safety instructions for operation and handling of the device

- Check the mains adapter for damage at regular intervals. Under no circumstances should the device be operated with a damaged mains adapter due to crushing, kinking, chafing or other influences. If you notice any damage to the mains adapter, stop your work immediately, turn off the main switch of the device and disconnect the mains adapter from the socket. First arrange for a replacement mains adapter before continuing your work or contact your local ProNails Distributor.
- Check the dust bag level every 10 hours of operation. Replace a full dust bag immediately. After a set of 5 dust bags has been used up, the motor filter must also be replaced.
- If the ambient conditions are outside the permissible operating limits, interrupt the manicure or pedicure service immediately and switch off the appliance.
- Sufficient ventilation of the appliance is necessary to prevent too much heat from developing inside the appliance. For this reason, the appliance should not be placed near sources of heat such as radiators.
- Make sure that no moisture or liquids get inside the device.
- Never pull the mains plug out of the socket with wet hands and do not pull on the mains cable to remove the mains plug from the socket!
- For safety reasons, the appliance must not be left switched on when it is unattended. The main switch must always be switched off in this case.
- Before each use of the device, the user must satisfy himself of its functional safety and proper condition.
- Keep the device out of the reach of children and unauthorised persons!
- According to the workplace ordinance, the electrical system of commercially used rooms must be checked regularly. Annual safety inspection of the device according to VDE 0701 and VDE 0702 (repeat inspection).
- Make sure that the handpiece is switched off before placing it in the handpiece holder.



- Moisture in the device may cause dangerous leakage currents to be discharged, which may result in a malfunction of the device and an electric shock! Therefore, do not work in rooms with high humidity and protect the device from any kind of moisture.

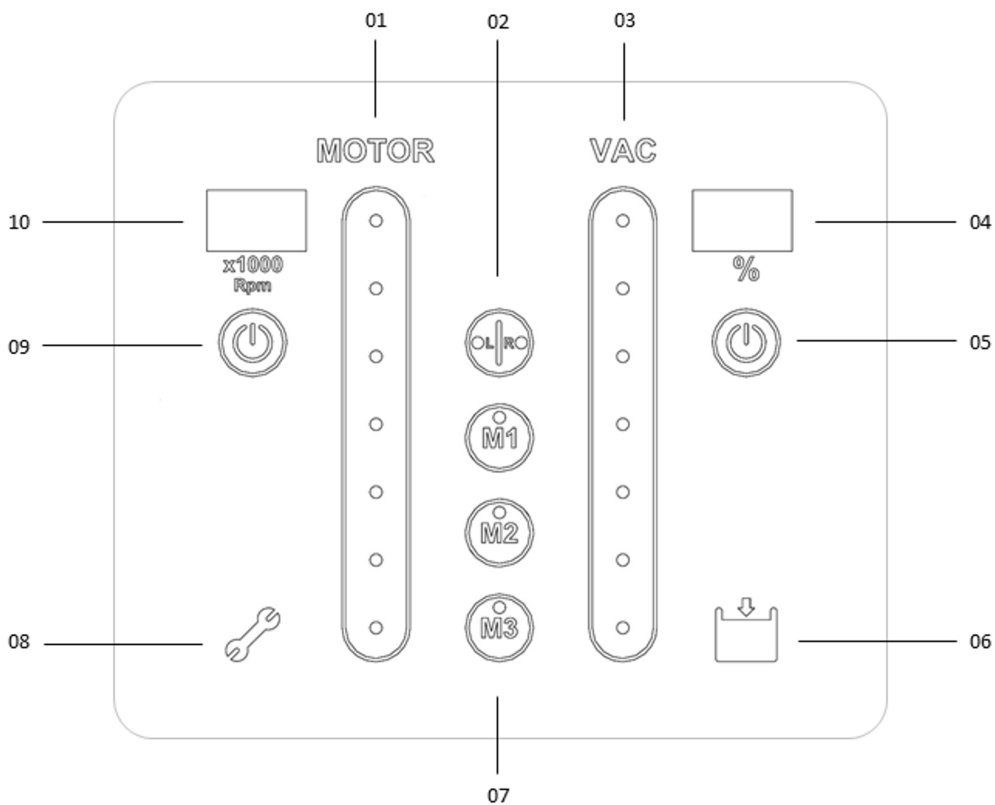


Figure 9 - Touch display

Nr.	Symbol	Function
01	Setting the rotation speed of the Micromotor	Increase & decrease the speed of the micromotor by wiping along the scale
02	Change rotation direction	Changing the direction of rotation (right/left)
03	Adjustment of the Suction power	Increase & decrease the suction power by wiping along the scale
04	Digital display of the suction power	Display of the suction power in percent
05	Suction	Switching the suction on and off
06	Warning dust bag	Lights up when the dust bag is full
07	Memory function	Selection of memory function M1, M2, M3
08	Warning notice Maintenance	Lights up as soon as the operating hours for regular maintenance have been reached
09	Rotation	Switching the micromotor on and off
10	Digital display of the speed of the micromotor	Display of the speed in steps of 1000 Rpm



• Do not use the handpiece if you want to change the direction of rotation. Wait until the direction of rotation has changed before you continue working.

7.2 MEMORY FUNCTION

With the memory function, different speeds of the micromotor can be stored with the corresponding suction power. The following settings are predefined at the factory. You can adjust these settings individually for yourself afterwards.

	M1	M2	M3
Speed	6.000 RPM	15.000 RPM	10.000 RPM
Extraction capacity	99 %	99 %	99 %
Direction of rotation	right	right	right

Changing the memory function

To change the values in the memory function, proceed as follows:

- (1) Switch on the device.
- (2) Set the desired combination of rotation speed, rotation direction and suction power.
- (3) Press the desired memory location M1, M2 or M3 for three seconds. Your set combination is now stored at the selected memory location.

7.3 SPEED REGULATION WITH THE FOOT CONTROL

A second way to control the speed of the micromotor is to use the foot control. The software automatically detects whether a foot control is connected to the device or not. With the progressive foot control, you can increase or decrease the desired speed steplessly.

7.4 KEY LOCK TOUCH DISPLAY

If you want to clean the touch display, you can lock it for 30 seconds. To activate the key lock, press the ON/OFF key of the micromotor [09] for three seconds - then the touch display is locked for 30 seconds during which a 30 seconds count-down will be displayed on the screen.

7.5 REPLACING THE DUST BAG



- Never operate the appliance without a dust bag. This can lead to increased exposure to dust that is harmful to health and can permanently damage the appliance.

After 10 hours of operation, the user is informed when the dust bag needs to be replaced by the following illuminated symbol:



Please now check the filling level of the dust bag and replace the dust bag if necessary.

Pressing the on/off button of the extractor for 3 seconds resets the hour counter to zero.

To change the dust bag, proceed as follows:

- (1) Switch off the device before changing the dust bag.
- (2) Carefully pull the suction chamber cover out of the suction chamber towards you by the handle element. Make sure that the filled dust bag does not slip off.
- (3) Hold the dust bag downwards and pull it carefully from the pipe socket so that no dust particles escape.
- (4) Dispose of the dust bag properly.
- (5) Check the opened suction chamber for possible dirt and remove it if necessary.
- (6) Now slide a new dust bag onto the pipe socket as far as it will go.
- (7) Then insert the pushed-on dust bag into the suction chamber of the device and connect the suction chamber cover via the contact pins with the contact sockets on the suction chamber of the appliance.
- (8) Switch the appliance on again - the appliance is now ready for use again.



- Always keep the extraction chamber clean.
- Check the level of the dust bag once a week.
- The dust bag must not be emptied or reused



- Make sure to use only original dust filters from the manufacturer. You can order new dust bags from your contract partner under item number 33041.11..

7.6 REPLACING THE VACUUM FILTER

To ensure high suction power of the appliance and occupational safety with regard to dust exposure at the workplace, the motor filter must be changed after consumption of a dust bag set (5 pieces of dust bags).

To change the engine filter, proceed as follows:

- (1) Switch off the device before changing the motor filter.
- (2) Carefully pull the suction chamber cover by the handle element towards you out of the suction chamber. Make sure that the filled dust bag does not slip off the hose nozzle.
- (3) Check the opened suction chamber for possible dirt and remove it if necessary.
- (4) Remove the motor filter located on the back of the suction chamber.
- (5) Dispose of the motor filter properly.
- (6) Insert the new motor filter into the suction chamber.
- (7) Then close the suction chamber again with the suction chamber cover. Make sure the dustbag is properly connected.
- (8) The device is now ready for use again



- When closing the extraction chamber, make sure that the contact pins of the hose connector match the contact bushes on the extraction chamber of the device and are not damaged by possible jamming.

8 OPERATION - HANDPIECE

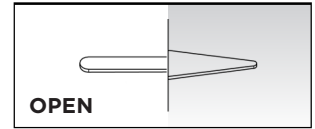
8.1 CHANGING THE BITS



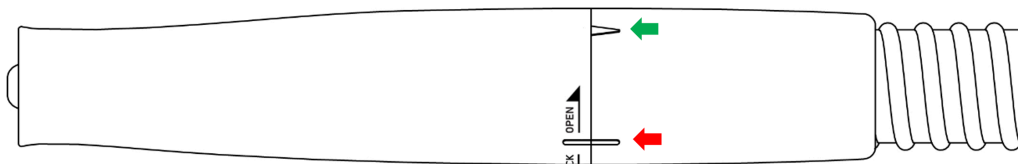
- Never change or insert rotating instruments until the micromotor has come to a complete stop.

To change the bits, proceed as follows:

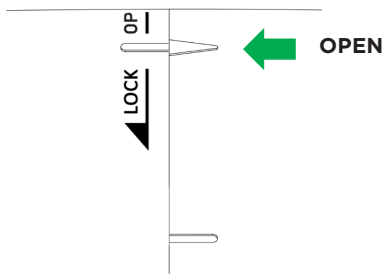
1. Switch off the micromotor before inserting the bit.
2. To be able to remove the bit, turn the handpiece in the **“OPEN”** direction - until the following markings coincide
3. Remove the bit from the chuck.
4. Now insert the new bit as deeply as possible into the chuck until the end stop can be felt.
5. To lock the bit firmly in place again, turn the handpiece in the **“LOCK”** direction until the following markings are aligned. Never lock half-way and always make sure you turn into the fully locked position as shown.



6. Check that the instrument is firmly in place so that it cannot come loose during treatment.
7. The handpiece with the newly inserted bit is now ready for use.



Position: collet chuck open (OPEN)
the bit can be changed.



Position: Collet closed (LOCK).
the bit is locked.

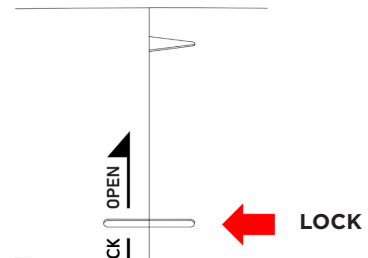


Figure 10 - Changing bits

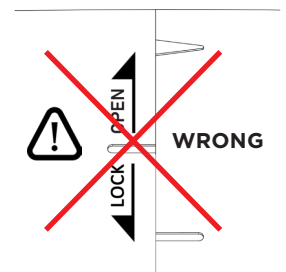


- To check the concentricity of the rotating instruments, we recommend using a cutter check gauge (see accessories).



Safety instructions for the use of rotary instruments

- Do not touch rotating instruments, there is a risk of injury!
- Only use bits up to a maximum diameter of 6 mm.
- Only use bits with a stainless steel shank.
- Disinfectants and cleaning agents with corrosion protection must be used for instruments that are not protected against corrosion.
- Avoid contact with H₂O₂ (hydrogen peroxide). Carbide instruments are attacked and damaged.
- Rotating instruments made of hard metal and non-rust-proof instruments can become corroded which is damaging to the handpiece.
- Clamp bits as deeply as possible .
- Avoid jamming or levering when inserting bits, as this may increase the risk of breakage. Bring the instruments up to speed before applying them to the skin or nail.
- Excessive contact pressure can cause damage to the skin or nail areas due to overheating.
- Adhering to the speed recommendations of the manufacturer for the respective instruments leads to the best working results. Exceeding the maximum permissible speed of the instruments (burs and grinders) can damage or destroy the instruments and/or the handpiece.



- For the maximum permissible speed, please refer to annex 1
- For safety reasons, do not use oily, worn or defective instruments that do not run smoothly, as otherwise a firm fit in the collet chuck of the handpiece cannot be guaranteed.
- Only insert dry instruments into the handpiece.
- Only rotary instruments with a cylindrical shaft diameter of 2.35mm may be used. Further information can be found in DIN EN ISO 1797-1.
- The rotary instruments should be stored dry at room temperature, protected from the effects of sunlight, heat and moisture.
- Rotating instruments should be stored in suitable stands, trays or other containers.

8.2 DISCONNECTING THE HANDPIECE FROM THE MOTOR UNIT

To disconnect the handpiece from the motor unit, proceed as follows:

- (1) Turn the outer sleeve to the open position before removal and remove any bit or dummy pin from the handpiece. The straight line should be alligned with the triangle as shown.
- (2) Remove the outer sleeve of the handpiece by pulling it straight - do not twist or bend it.
- (3) Now remove the inner sleeve from the motor unit by pulling it straight off.
- (4) The handpiece is now disconnected from the motor unit and can be cleaned and/or disinfected.

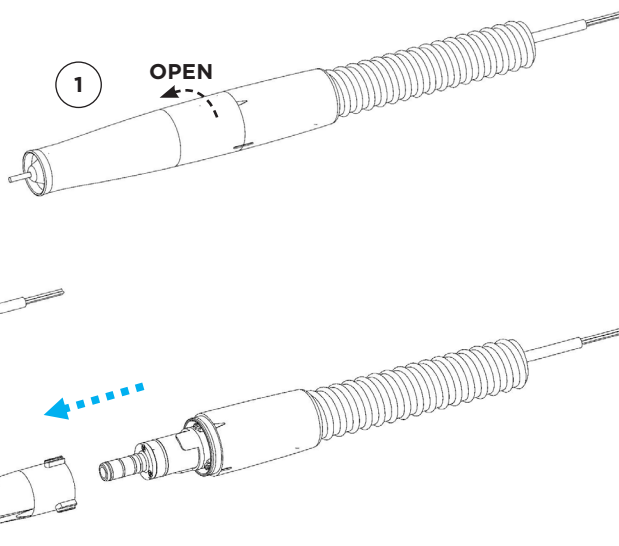


Figure 11 - Disassembly of the handpiece

8.3 ATTACHING THE HANDPIECE TO THE MOTOR UNIT

To attach the handpiece to the motor unit, proceed as follows:

- (1) Push the inner sleeve onto the motor unit and press both components together until you feel and hear the inner sleeve click into place on the motor unit. Make sure to align the narrow opening at the narrow lip and the wider opening at the wider lip as shown on the pictures.

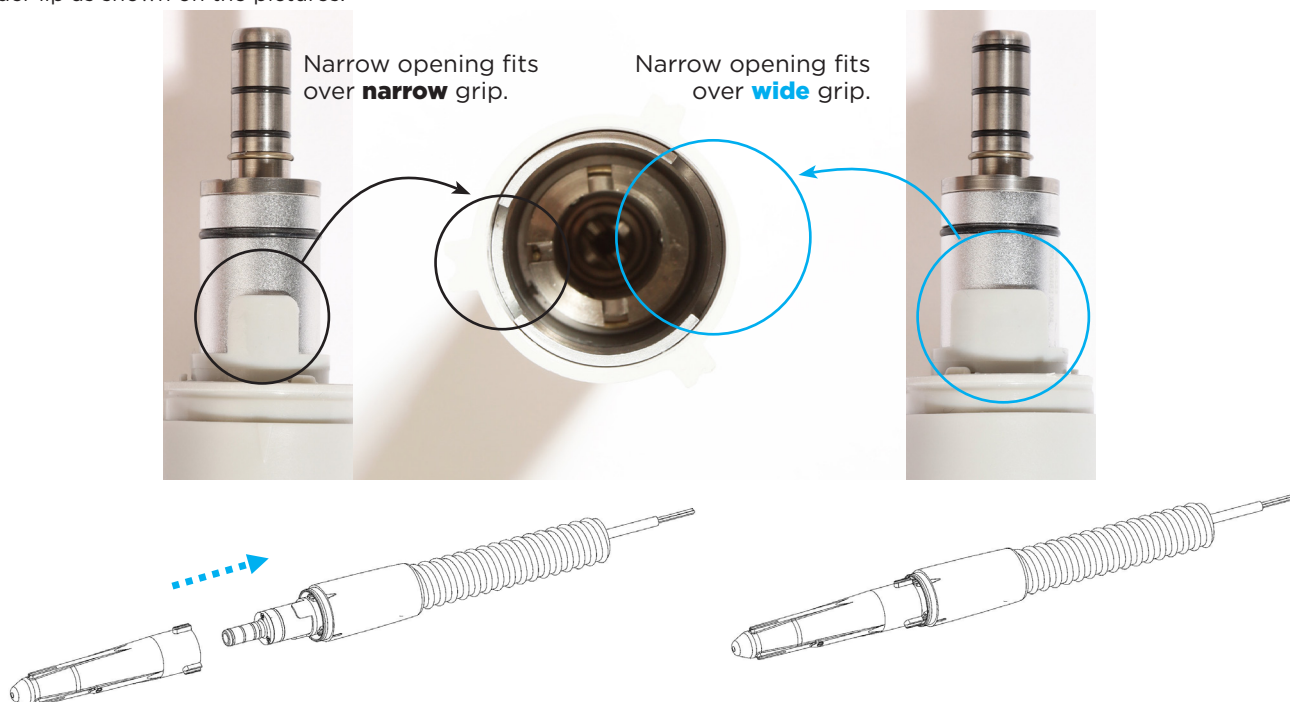


Figure 12 - Reassembly of inner sleeve to the motor unit



Figure 13 - Alignment of the outer sleeve to the inner sleeve

(2) Now push the outer sleeve over the inner sleeve onto the motor unit, observing the inner alignment. If the handpiece was in the OPEN (= unlocked) position before removing the outer sleeve, then it must be reassembled in the open/unlocked position. This means that the vertical mark on the outer sleeve should also be aligned with the triangular marking on the handpiece. Turn the outer sleeve to the correct alignment position until it can be pushed over the inner sleeve without exerting force. The outer sleeve can only be pushed over the inner sleeve in one position without exerting force. Engage the outer sleeve in the motor unit with slight pressure.

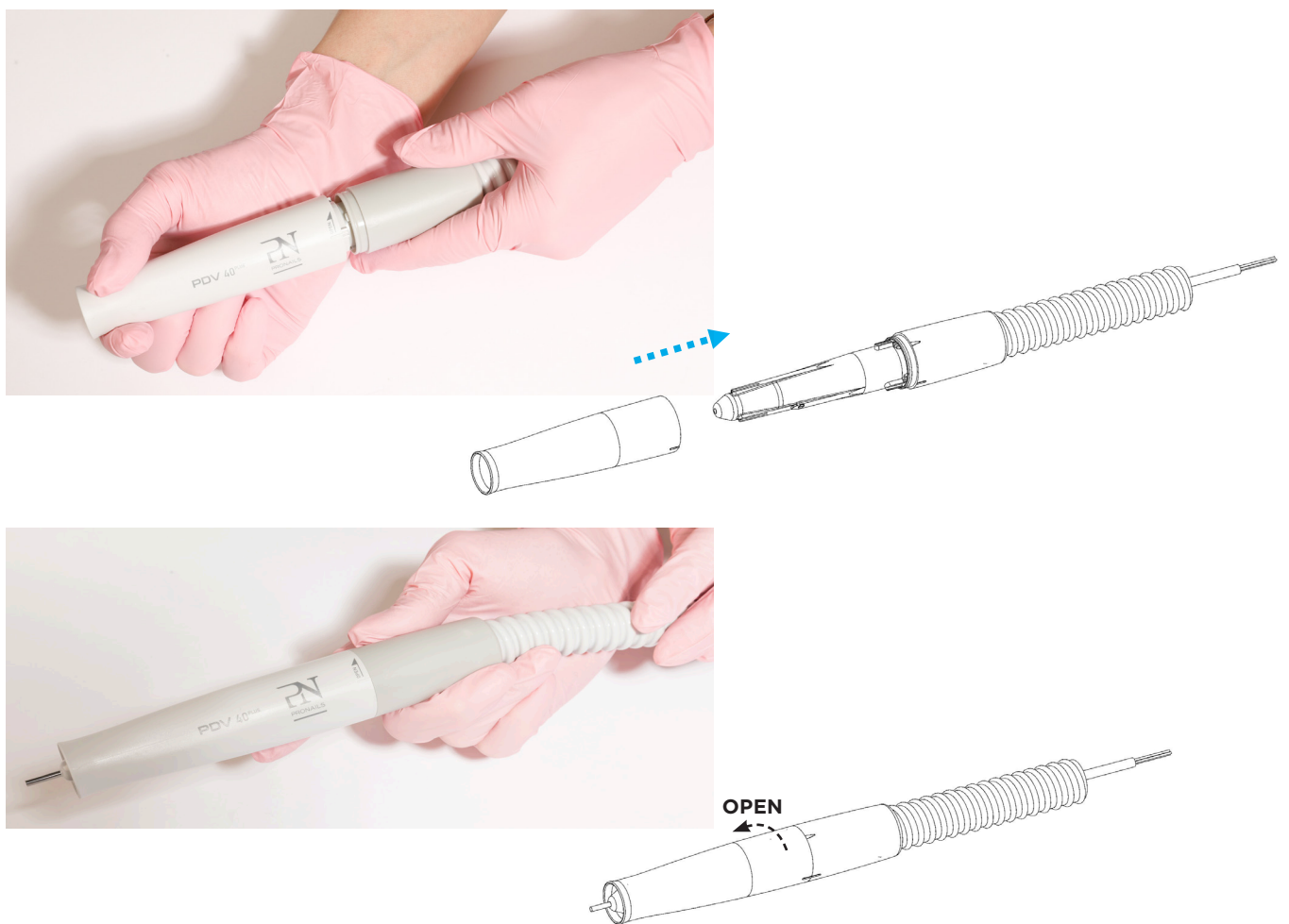


Figure 14 - Reassembly of outer sleeve to the handpiece

9 CLEANING, PREPARATION AND CARE

9.1 CLEANING AND DISINFECTION - HANDPIECE



- Do not use any solvent-based or aggressive cleaning agents. Observe the prescribed cleaning intervals!
- NEVER clean the handpiece in boiling water, with chemicals, wire brushes or ultrasound. NEVER place the handpiece in disinfectant or ultrasonic baths. NEVER place or immerse the handpiece in liquid, otherwise the handpiece could be damaged.
- Do not lubricate or oil the motor.

Process for the handpiece

1. Preparation

- Remove the bit from the handpiece.
- Disconnect the handpiece from the motor unit
- Collect all components to be reprocessed in an area exclusively for contaminated instruments
- Remove all particles and debris from the handpiece and, if necessary, disinfect the handpiece on all external surfaces with a cloth soaked in disinfectant. We recommend water-based disinfectants.
- Do not use a wire brush!

2. Cleaning

- Clean the handpiece with ProNails Clinilotion and a disposable cloth or tissue.
- Do not use a wire brush!

3. Disinfection

- Manual disinfection is carried out with Clinilotion and a disposable tissue.
- Never place the handpiece in the ultrasonic unit.
- Do not use disinfectants that are strongly alkaline or contain chlorine. The pH value of these agents must be between 2.5 and 9. Pay attention to the exposure times specified by the manufacturer.

4. Sterilisation

- If necessary, the outer and inner sleeve of the handpiece can be sterilised in an autoclave up to a temperature of 135°C maximum. Please observe the instructions for use of the autoclave.
- Take into account the applicable national hygiene regulations for the reprocessing of handpieces.

5. Storage

- Store the handpiece protected from dust, sunlight, moisture and temperature fluctuations.

9.2 CLEANING AND DISINFECTION - DEVICE

Clean the housing (incl. hose) with a cloth moistened with ProNails Clinilotion.

If you want to clean the touch display, you can lock it for 30 seconds. To activate the key lock, press the ON/OFF key of the micromotor [09] for three seconds - then the touch display is locked for 30 seconds during which a 30 seconds count-down will be displayed on the screen.



- Always switch off and unplug the appliance before cleaning - otherwise there is a risk of electric shock!
- Do not use alcoholic, solvent-based or aggressive cleaning agents.

10 MAINTENANCE

Have the prescribed service and maintenance work carried out regularly to ensure sustainable use and value retention.

Equipment and handpiece maintenance

Every 500 operating hours

After the required number of operating hours has been reached, the following symbol lights up in the touch display as a maintenance notice.



To have maintenance carried out correctly by an authorised ProNails specialised technician.



- Maintenance and repair may only be carried out by authorised specialist personnel. Modifications and repairs by unauthorised personnel will void any warranty and liability of the manufacturer.



- Safety checks must be carried out at least every 12 months: Visual inspection of the device and accessories, functional test of the device.

- As the manufacturer, we can only consider ourselves responsible for the safety-related properties of the device if maintenance and repairs are carried out by the manufacturer or a repair company expressly authorised by the manufacturer to do so, the prescribed service intervals are observed and the device is used in accordance with the instructions for use.

- A further prerequisite is that components which affect the safety of the device are only replaced with original parts.
- Use the original packaging to return the device for repair or maintenance purposes. For correct packaging instructions see annex 2.

11 ACCESSORIES AND SPARE PARTS

ProNails authorised bits	Find on our website www.pronails.com
Set of 5 dust bags with motor filter	90105
Progressive Foot Pedal	90104
Burr test gauge	Contact your local distributor
ProNails Clinilotion	Find on our website www.pronails.com

12 TECHNICAL DATA

Mechanical data

Dimension (HxWxD)	205 mm x 160 mm x 220 mm
Weight, including handpiece	2,5 kg

Electrical data

Rated voltage	110-230 V AC / 50/60 Hz
Power consumption	120 W
Protection class	Class II

Operating data

Operating mode	Continuous operation
Acoustic emission	49 dB (A)
Speed micromotors	5.000 – 40.000 Rpm

13 WARRANTY

The warranty is 1 year or a maximum of 500 operating hours, excluding consumables and wearing parts such as filter bags, motor filters, sealing rings, ball bearings, etc.

The warranty is extended by a further 500 operating hours, but does not exceed the original 12 months in total, if the recommended device maintenance has been carried out in good time. The manufacturer reserves the right to determine and analyse the cause of any problems



The warranty expires

- if the liquids and consumables specified in the information for use are not used,
- if the customer or other unauthorised persons tamper with the device or handpiece,
- if the device is used for purposes other than intended,
- if damage is caused by gross negligence or improper use.

14 DISPOSAL

Please observe the following instructions for disposing of the device, as infectious materials such as tissue residues and grinding dust residues may be present on the housing, attachment and accessory parts and filters.



- Appliances marked with this symbol must not be disposed of with household waste! You are legally obliged to dispose of old appliances separately from household waste (European Directive 2012/19/EU). You can obtain further information on the disposal of your appliance free of charge from your contract partner from whom you purchased the appliance.

15 POSSIBLE ERROR MESSAGES

Malfunction	Possible cause	Measures
Bit does not rotate	<ul style="list-style-type: none">• Is the device switched on?• The handpiece is not fully/properly locked.• Defect on cable or motor.	<ul style="list-style-type: none">• Check that the main switch is turned on.• Reopen the handpiece and then reclose. Make sure to turn the outer sleeve to the end position to align the marking of the sleeve with the closed marking line on the micromotor part (rose) of the handpiece.• Contact your ProNails distributor
Weak suction power	<ul style="list-style-type: none">• The dust bag is full.	<ul style="list-style-type: none">• Change dust bag.
Device does not work, No display on the Front panel	<ul style="list-style-type: none">• Is the device switched on?• Is the mains cable not plugged in correctly?• Socket has no mains voltage.	<ul style="list-style-type: none">• Check that the mains switch is turned on.• Check that the mains plug is correctly plugged in.• Check the function of the socket.



• In case of other problems or malfunctions, please contact your contract partner or the manufacturer. Have repairs carried out by authorised specialists only.

ELECTRIC FILING MANICURE BITS

USE ONLY THE FOLLOWING APPROVED BITS AT THE CORRECT ROTATION SPEED

GEL REMOVAL

ELECTRIC MANICURE

Cuticle clean Bit - MIN 3.000 - MAX 6.000 RPM - ref. 29259



6.000 RPM

Diamond Nail Prepper Cone - ref. 28564



6.000 RPM

MIN 6.000 - MAX 30.000 RPM

Tungsten Trimmer Bit - MIN 6.000 - MAX 15.000 RPM - ref. 29487



10.000 RPM 15.000 RPM

Diamond Grinder Bit - MIN 6.000 - MAX 30.000 RPM - ref. 29486



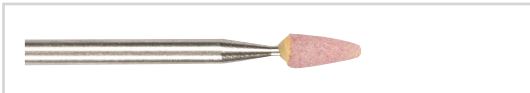
10.000 RPM 15.000 RPM

Diamond Ball Bit - MIN 6.000 - MAX 30.000 RPM - ref. 29485



10.000 RPM 15.000 RPM

Finisher Bit - MIN 6.000 - MAX 30.000 RPM - ref. 29484



6.000 RPM

NATURAL NAIL PREPARATION

Stainless Steel Tip for Sanders - ref. 30049



6.000 RPM

Green Sanders Fine 50 pcs - ref. 29916
Sanders are single use



ONLY FOR FLEXI BUILDERS

Green Sanders Medium ref. 29917
Sanders are single use



10.000 RPM



20.000 RPM

Flexi Builder
(Clear - Pink -
Frosted Pink)

FOR ALL PRONAILS BUILDER GELS



10.000 RPM



15.000 RPM

HIGH PRECISION DRILLS

MIN 6.000 - MAX 15.000 RPM

High Precision Drill Blue - ref. 28306

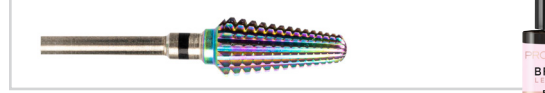


High Precision Drill Purple - ref. 28308



Unicorn Gel Remover Bit

MIN 10.000 - MAX 15.000 RPM - ref. 29934



SUITABLE TO REMOVE BFLEX GELS



CERAMIC BITS

MIN 6.000 - MAX 15.000 RPM

Ceramic Flame Bit Medium - ref. 29271



Ceramic Round Barrel Bit Medium Extra Long - ref. 24337



ELECTRIC FILING PEDICURE BITS

USE ONLY THE FOLLOWING APPROVED BITS
AT THE CORRECT ROTATION SPEED



ELECTRIC PEDICURE

Cuticle clean Bit - MIN 3.000 - MAX 6.000 RPM - ref. 29259



6.000 RPM

Diamond Nail Prepper Cone - ref. 28564



6.000 RPM

MIN 6.000 - MAX 30.000 RPM

Tungsten Trimmer Bit - MIN 6.000 - MAX 15.000 RPM - ref. 29487



10.000 RPM



15.000 RPM

Diamond Grinder Bit - MIN 6.000 - MAX 30.000 RPM - ref. 29486



10.000 RPM



15.000 RPM

Diamond Ball Bit - MIN 6.000 - MAX 30.000 RPM - ref. 29485

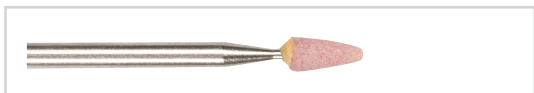


10.000 RPM



15.000 RPM

Finisher Bit - MIN 6.000 - MAX 30.000 RPM - ref. 29484



6.000 RPM

CALLUS REMOVAL

10.000 RPM

Ceramic Pedicure Callus bit - ref. 29721



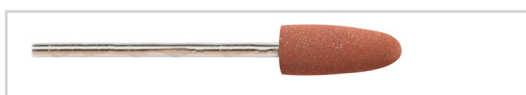
10.000 RPM

Diamond Pedicure Callus bit - ref. 29722



15.000 RPM

Silicon Pedicure Polisher bit - ref. 29723



CLEANING BITS

Cleaning brush for bits - ref. 29724

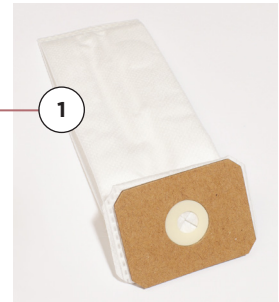


PACKAGING INSTRUCTIONS FOR MAINTENANCE OR REPAIR OF VISION PRO 1000

USE THE ORIGINAL BOX OF YOUR VP1000 FOR RETURNS

STEP 1

- Remove the dust bag and dispose of in waste container



STEP 2

- Disconnect power supply and foot pedal and remove all accessories such as cotton pads, bits, suction tube and antenna.
- Wrap the device in plastic bag supplied with delivery.



STEP 3

- Place the support base at the bottom of the box with the corners folded downward and the plastic surface on top as shown



STEP 4

- Place the device upright on top of the plastic support foil with the bit holes facing upwards.
- Wrap the power supply and place next to the device as shown.



STEP 5

- Protect the handpiece with the isolation foam and wrap the connection part of the vacuum chamber with bubble foil.
- Carefully place the handpiece in the box around the device as shown



STEP 6

- Place the top protection frame with the plastic foil facing the device and the folded edges facing upwards.
- Place the power plug connection on top of the frame as well as the wrapped antenna.



STEP 7

- Tape the box closed.

